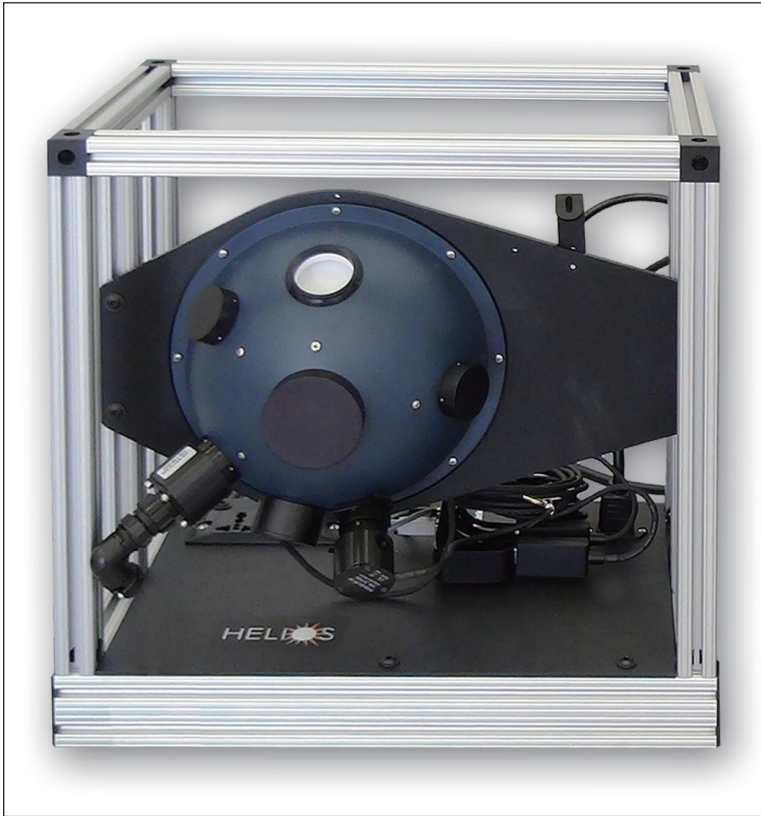




HSA Sphere Assemblies



VALUE

Rugged cage design provides protection and support for HELIOS components and systems

Spectrafect® and Spectralon® sphere material options

Many additional ports for current and future requirements

Modular baffles

Plugs and covers for more ports (see specifications to ensure needed items are sourced)

Powered universal plugs

(7) port, powered USB hub and cable routing

Memory capability in the sphere chassis to store configurations and settings

Spectrafect touch-up paint and tool kit

Optional travel cases for spheres may be added

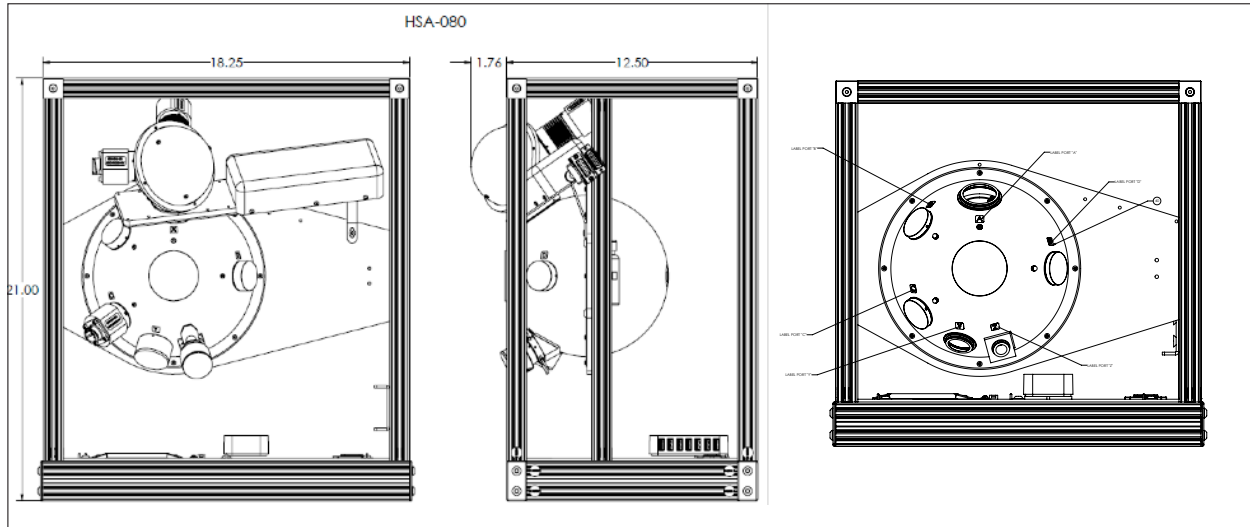
Optional Dark-Kit for enclosing HELIOS Sphere Cages to minimize stray light

The HELIOS Sphere Assembly (HSA) is an innovative robust chassis to carry the integrating sphere and provide a home and hub for our optical and electrical components. The HSA features the Cage, a unique channeled aluminum structure designed for mounting and protection of our systems during bench top laboratory use or field use. There are (5) sphere models available to suit different sizes of apertures, spectral ranges and environmental testing needs.

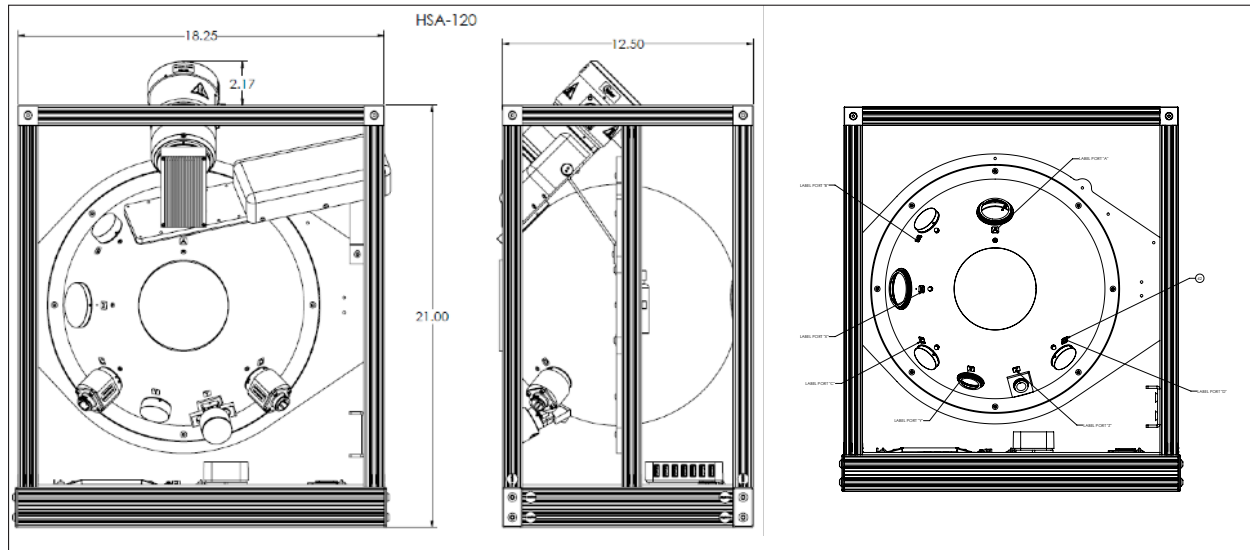
Specifications

| Model Number | HSA-20F | HSA-12F | HSA-08F | HSA-12L | HSA-08L |
|---|-----------------------------|-----------------------------|--------------------------|-----------------------------|--------------------------|
| Part Number: | | | | | |
| Coating / Material: | Spectrafect® | Spectralect® | Spectralect® | Spectralon® | Spectralon® |
| Sphere Internal Diameter: Inches: (Meters) | 20 (0.5) | 12 (0.3) | 8 (0.2) | 11.5 (0.29) | 7.5 (0.19) |
| Frame Type: | 20in Cage | 12in Cage | 12in Cage | 12in Cage | 12in Cage |
| Output Port Size: Inches: (Meters) | 8" (0.2) | 4" (0.1) | 2" (0.05) | 4" (0.1) | 2" (0.05) |
| Port Cover (black) For Output: | (1) 8" | (1) 4" | (1) 2" | (1) 4" | (1) 2" |
| Number of Input Ports - (#) Size: | (1)-1.75", (1)-1.5", (4)-1" | (1)-1.75", (1)-1.5", (3)-1" | (1) 1.5", (3) 1" | (1)-1.75", (1)-1.5", (3)-1" | (1) 1.5", (3) 1" |
| Number of Detector Ports - (#) Size: | (1) 1", (1) 0.5" w/wedge | (1) 1", (1) 0.5" w/wedge | (1) 1", (1) 0.5" w/wedge | (1) 1", (1) 0.5" w/wedge | (1) 1", (1) 0.5" w/wedge |
| Reducers for Input Ports - (#) Size: | None | None | None | None | None |
| Port Plugs (white) for Input Ports - Sizes: | (3) 1" | (3) 1" | (3) 1" | (3) 1" | (3) 1" |
| Baffle Configuration: | Diff/Flag/Flag/Flag/Flag | Diff/Flag/Flag/Flag | Diff/Flag/Flag/Flag | Diff/Flag/Flag/Flag | Diff/Flag/Flag/Flag |
| Baffle Locations: (O'Clock) | 12/1/4/8/10 | 12/4/8/10 | 12/3/8/10 | 12/4/8/10 | 12/3/8/10 |
| Baffle Plugs: | N/A | N/A | N/A | (3) SL Baffle Plugs | (3) SL Baffle Plugs |
| Labsphere Tool Kit: | Yes | Yes | Yes | Yes | Yes |
| Spectralect Touch Up Kit: | Yes | Yes | Yes | Yes | Yes |
| Powered Universal Plug: | (2) | (2) | (2) | (2) | (2) |
| 7 Port Powered USB Hub: | Yes | Yes | Yes | Yes | Yes |

HSA-080 Dimensional Drawing



HSA-120 Dimensional Drawing



HSA-200 Dimensional Drawing

